

**For meeting on  
20 October 2011**

**Paper FC 14/2011**

## **Family Council**

### **The Comprehensive Child Development Service**

#### **PURPOSE**

The powerpoint presentation which features the scope and operation of the Comprehensive Child Development Service is attached at **Annex**.

#### **ADVICE SOUGHT**

2. Members are invited to note the paper.

**Family Council Secretariat  
October 2011**

**The  
Comprehensive Child Development Service**

**兒童身心全面發展服務  
( 0 – 5 years )**

Department of Health  
Hospital Authority  
Social Welfare Department / NGOs  
Education Bureau

---

**Background**

A 2005 Policy Address Initiative

- To address the developmental needs (成長發展需要) of young children (0 to 5 years)
  - An integrated, community-based, child and family service model
  - Maternal and Child Health Centres (母嬰健康院) as a major platform
  - Alignment of the delivery of health, social and education services
-

## The Implementation of CCDS

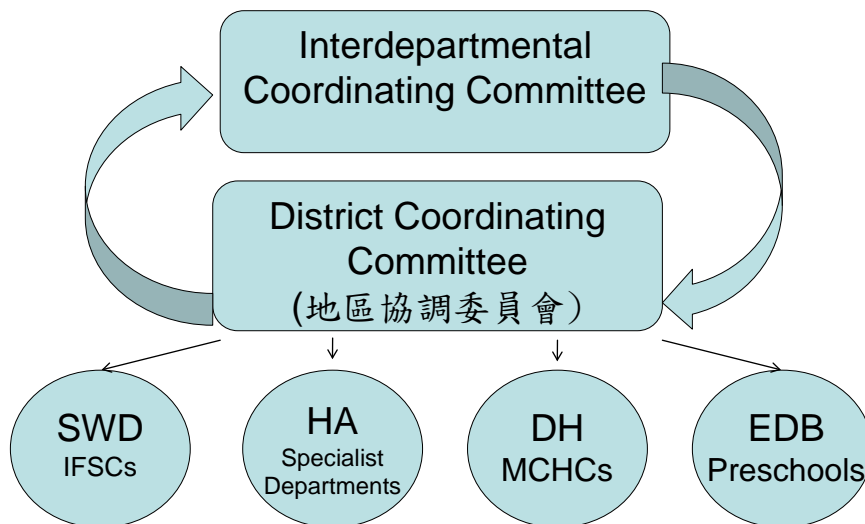
- First piloted in July 2005
  - Evaluation of pilot (July 2005 – September 2006) reported (初步成效評估報告) in January 2007
  - Extension to cover 50% of the target population, in 8 districts (13 MCHCs) by March 2009
  - Plan to extend in phases to the rest of Hong Kong in 2011- 2012
- 

## The Four Components of CCDS

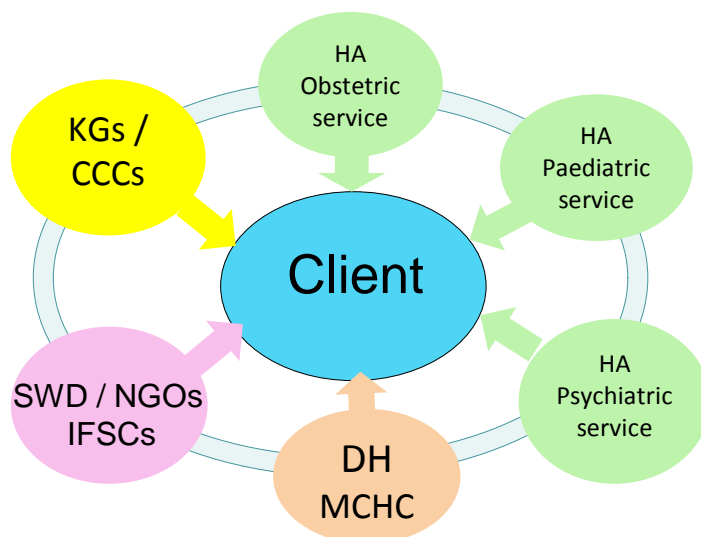
Early identification and management (及早識別和處理) of:

1. At-risk pregnant women (高危孕婦)
  2. Mothers with postnatal depression (PND) (產後抑鬱的母親)
  3. Children and families with psychosocial needs (有心理社會需要的兒童及家庭)
  4. Pre-primary children with physical, developmental and behavioural problems (有健康、發展及行為問題的學前兒童)
-

## Inter-sectoral / Inter-disciplinary Collaboration (跨界別、跨專業合作)



## A Client-centred Service (以人為本的服務)



## Evaluation Report (初步成效評估報告)

Completed in Jan 2007

### Did CCDS works?

Early evidence indicated that the CCDS can achieve its primary objective, i.e. the early identification of young children and their families in need and early intervention in meeting those needs.

- Both the **accessibility** and **acceptance** of various services were increased (獲取和接受不同的服務), particularly for the socially disadvantaged groups (弱勢社羣)
- **Improvement in the mental health outcome** (改善精神健康狀況) in some client groups.

---

### Outcome of a PND Screening (產後抑鬱普查) Programme using the Edinburgh Postnatal Depression Scale (愛丁堡產後抑鬱量表): a Randomized Controlled Trial (隨機對照試驗)

- Participants:
  - 462 Chinese mothers with 2-month-old babies visiting MCHCs
  - intervention group: screened for PND using EPDS
  - control group: screened for PND by clinical assessment
  - both groups: managed according to prescribed guidelines
- Results:
  - Intervention group: better mental health outcome as assessed by EPDS at 6 months (Risk Ratio 0.59; 95% CI = 0.39 to 0.89)
  - Number Needed to Screen = 25

J Public Health (Oxf). 2011 Jun;33(2):292-301. Epub 2010 Sep 29

## Evaluation: What worked? How and Why?

### Structural (結構) issues

- Visiting psychiatric nurses and social workers in MCHCs reduces stigmatization and inconvenience (減低負面標籤及不便之處)
- Staff self-efficacy (自我效能感) & professionalism(專業技能), morale (士氣)
- Privacy (私隱) during interviews
- Manpower & resources (人力資源)

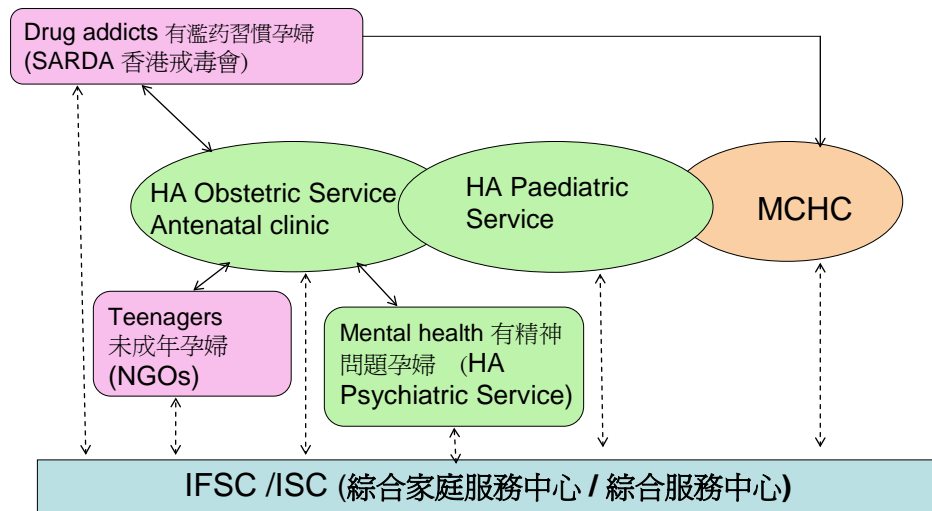
### Process (過程) issues

- Knowledge, attitude & skills of staff 知識、態度及技巧
  - Responsive & flexible (回應需要及彈性) service delivery
  - Cross-sectoral collaboration (跨界別合作) & open communication (坦誠溝通)
  - Experience sharing (經驗分享)
  - Team spirit & team work (團隊協作)
- 

## Early Identification & Management of At-risk Pregnant Women (及早識別及處理高危孕婦)

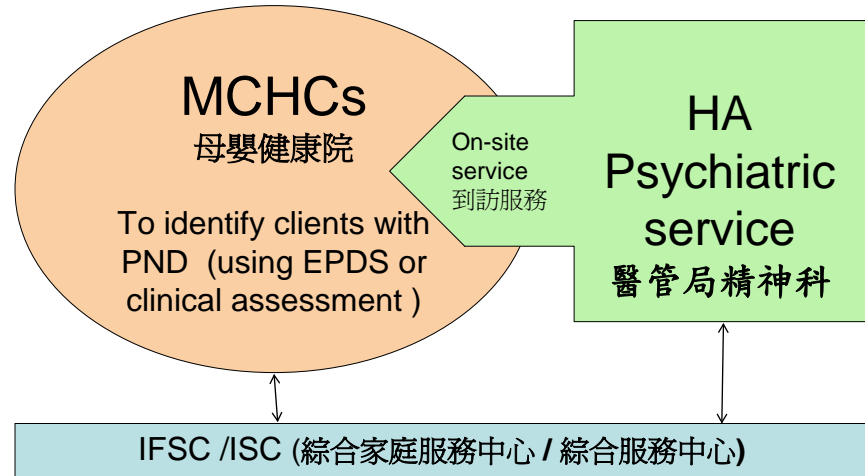
---

## Identification and Comprehensive Management of High-risk Pregnant Women



## Early Identification & Management of Mothers with Postnatal Depression (及早識別及處理 產後抑鬱的母親)

## Identification and Management of Mothers with Postnatal Depression (PND)

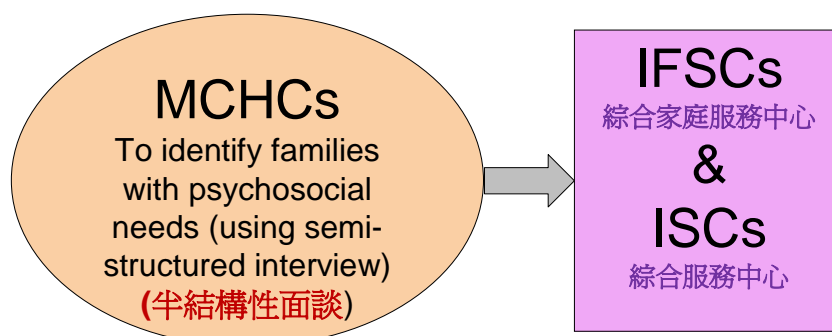


**Early Identification & Management of Children and Families with Psychosocial Needs**  
(及早識別及處理有心理社會需要的兒童及家庭)

---



## Identification and Management of Children & Families with Social Service Needs

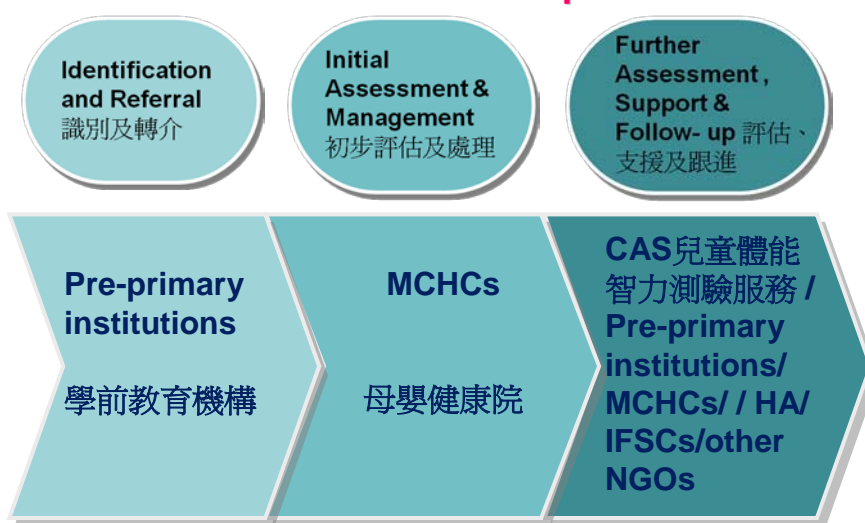


---

**Early Identification & Management of Pre-primary Children with Health & Developmental Problems**  
(及早識別及處理有健康、發展及行為問題的學前兒童)

---

## Identification and Management of Pre-primary Children with Health & Developmental Problems



## 學前兒童發展及行為處理

### 幼師參考資料套



## Parent Resources Corner / Kiosk (家長資源天地 / 站) at MCHC

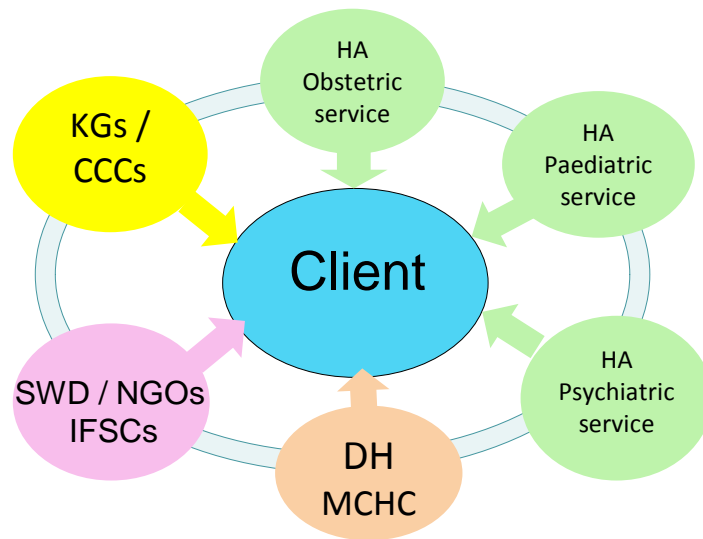
- Parent Resource Corners / Kiosks have been or will be set up in MCHCs to provide comprehensive information on child / family issues, and related services and resources in the community to families visiting the MCHCs.

---

## Parent Resources Corner / Kiosk at MCHCs



## A Client-centred Service through Intersectoral Collaboration



*Thank you*

---